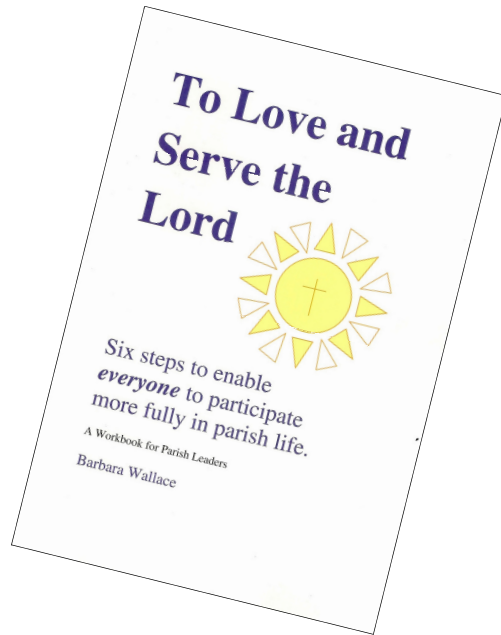


Thinking about what ministries you need in your parish?

Puzzled about how to get more people involved?

Need help with selecting, motivating, supporting, people to exercise ministries in the name of the church locally?

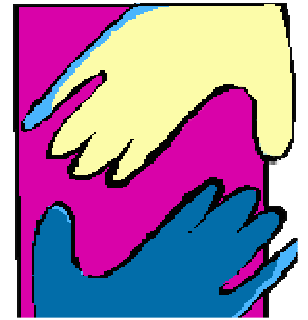


A new six step pack of guidance, ideas, discussion starters, support and good practice
Written by Roman Catholic educator Barbara Wallace.

For more information, inspection copies, or support in using these materials contact Caroline Pascoe on 01656 868851 or carolinepascoe@churchinwales.org.uk

See samples at www.llandaff.org.uk/ministry/collaborativeministry

...get involved... make a difference... better together...



extending your ministry of care

Many parishes in the diocese now have varieties of pastoral care teams.

This pack is designed to help you

- review and renew an existing team
- if you are forming a pastoral team for the first time
- work within the guidelines Archbishop Barry issued for pastoral teams in June 2008.

Contact Caroline Pascoe on 01656 868851 or visit www.llandaff.org.uk/ministry/collaborativeministry to download samples of the pack

...get involved...make a difference...better together...